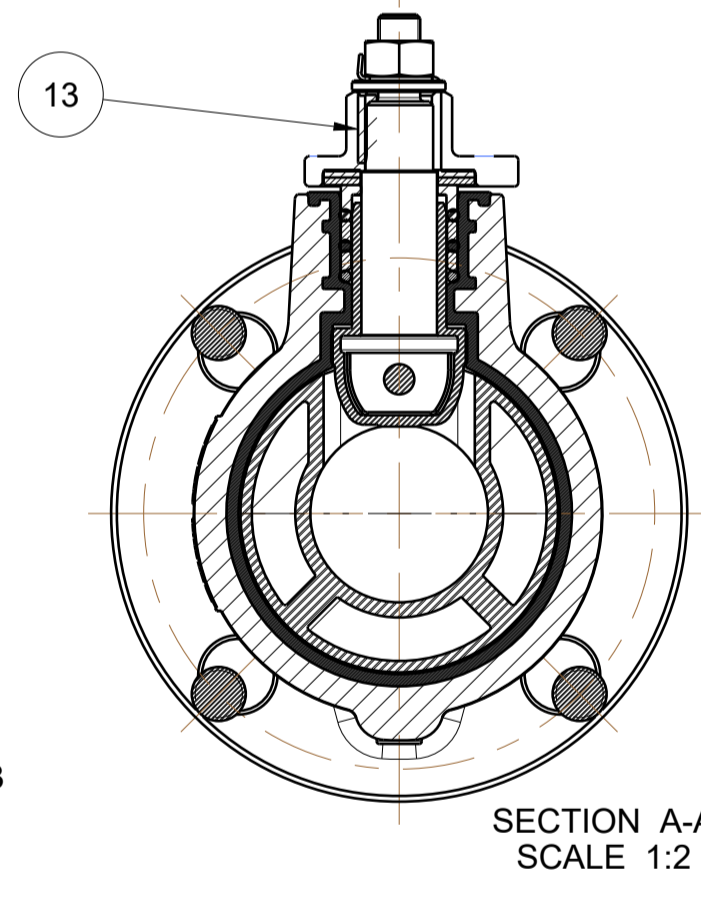
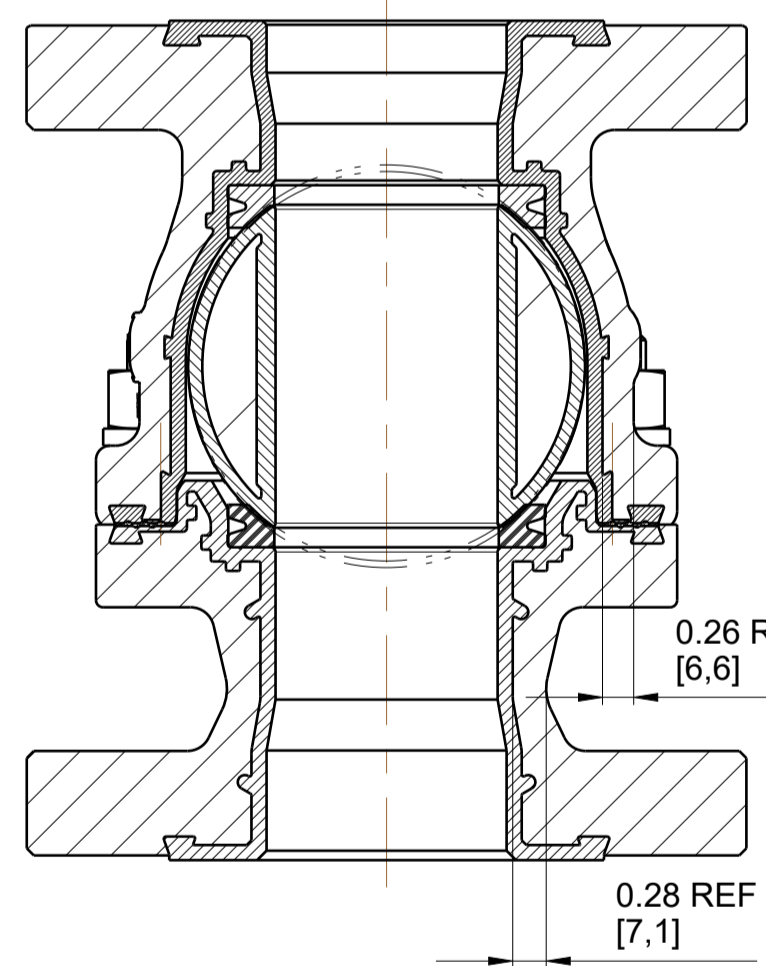
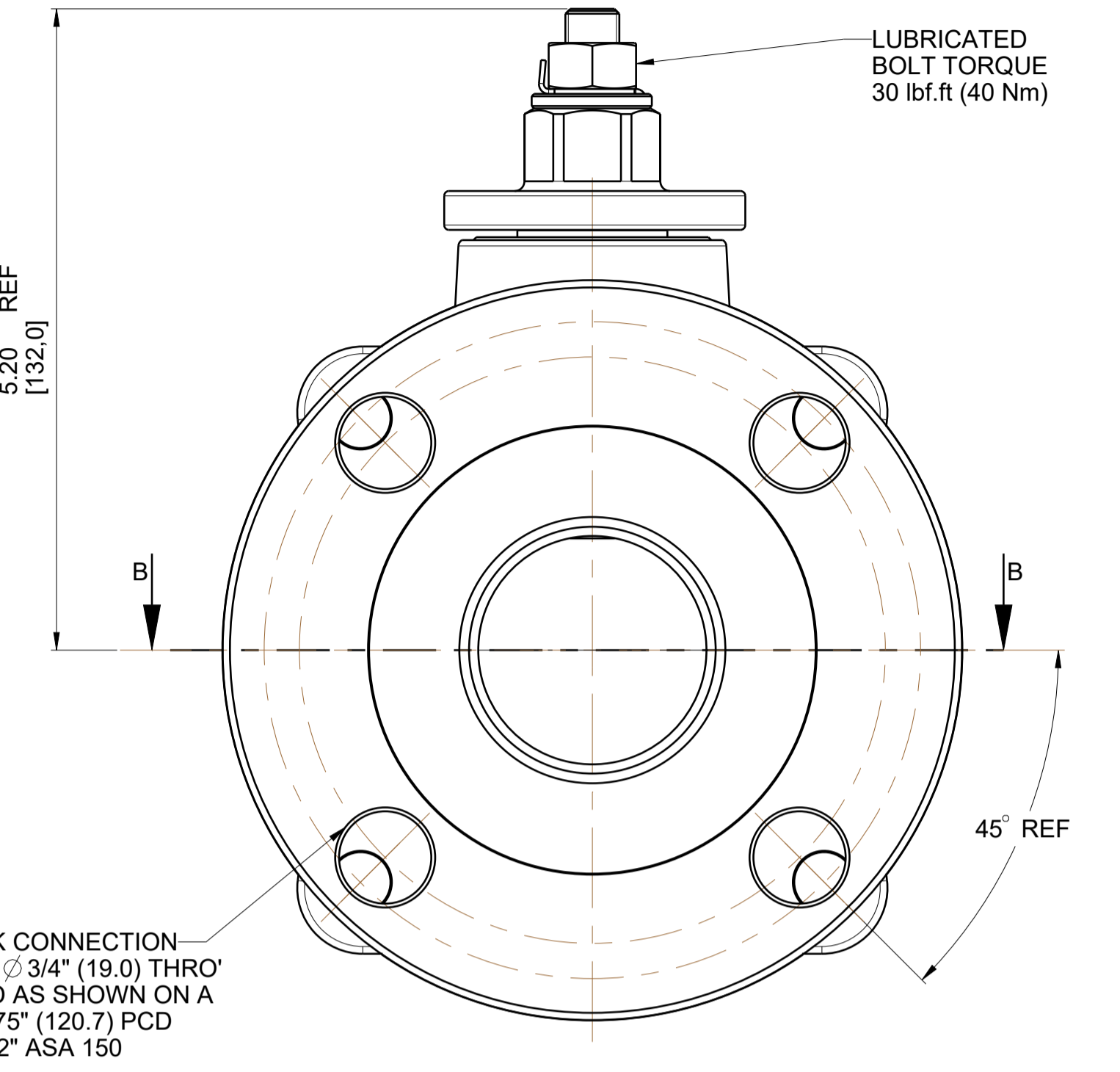
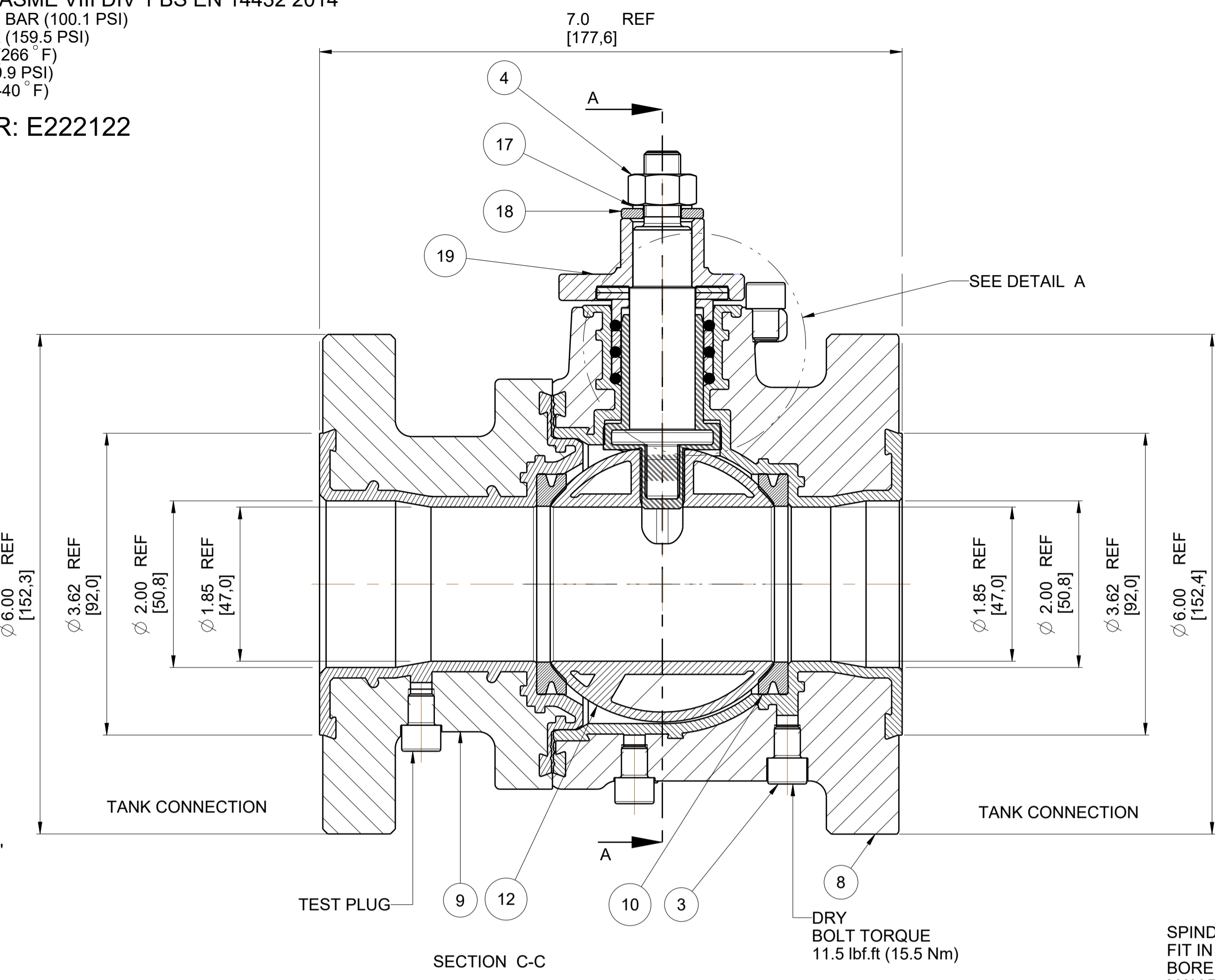
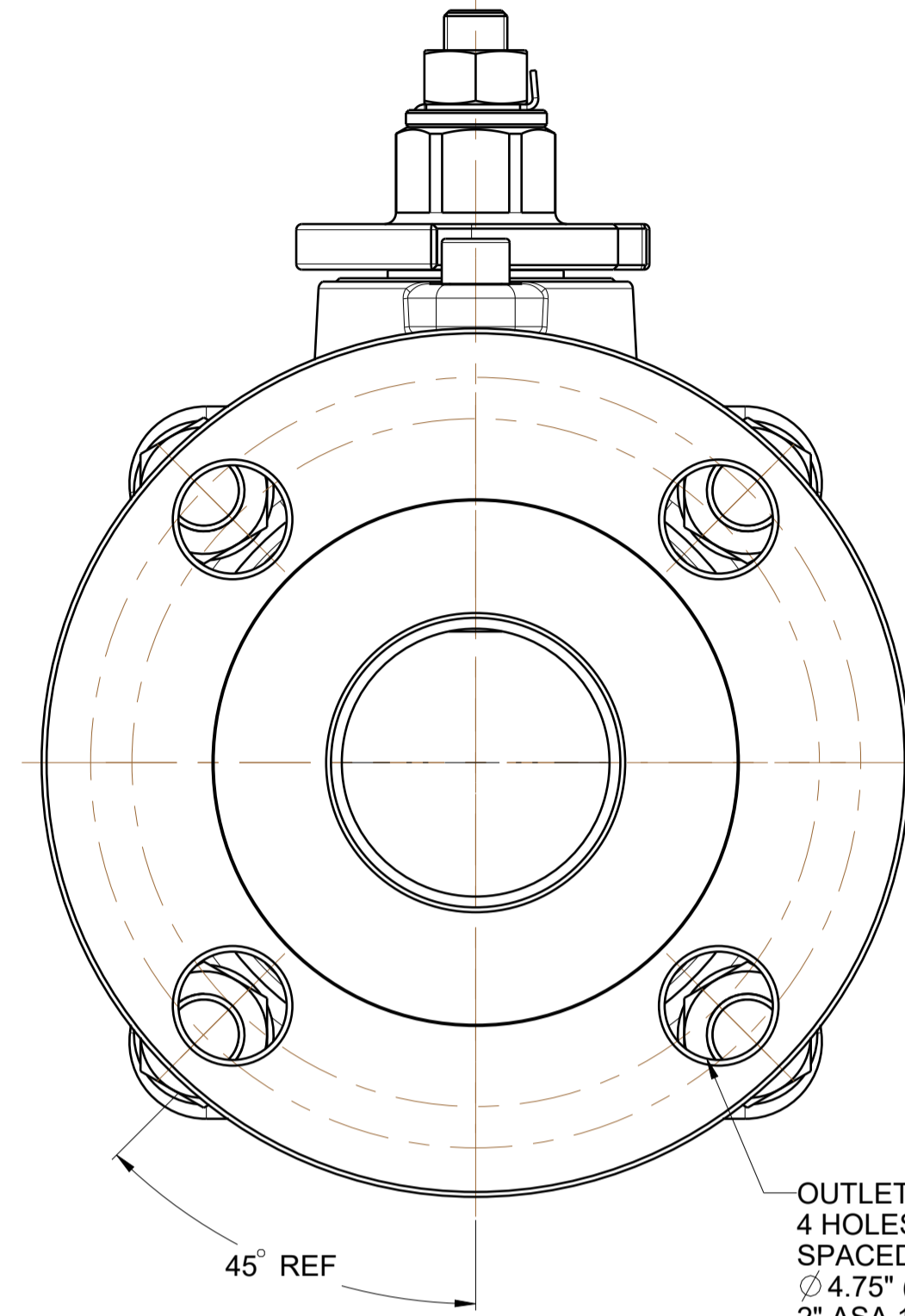


DESIGN CODES: ASME B16.34 ASME VIII DIV 1 BS EN 14432 2014  
 COLD RATING PRESSURE (CWP): 6.90 BAR (100.1 PSI)  
 SERVICE TEST PRESSURE: 11.00 BAR (159.5 PSI)  
 MAX DESIGN TEMPERATURE: 130 °C (266 °F)  
 MAWP AT MAX DESIGN TEMP: 5.51 (79.9 PSI)  
 MIN DESIGN TEMPERATURE: -40 °C (-40 °F)

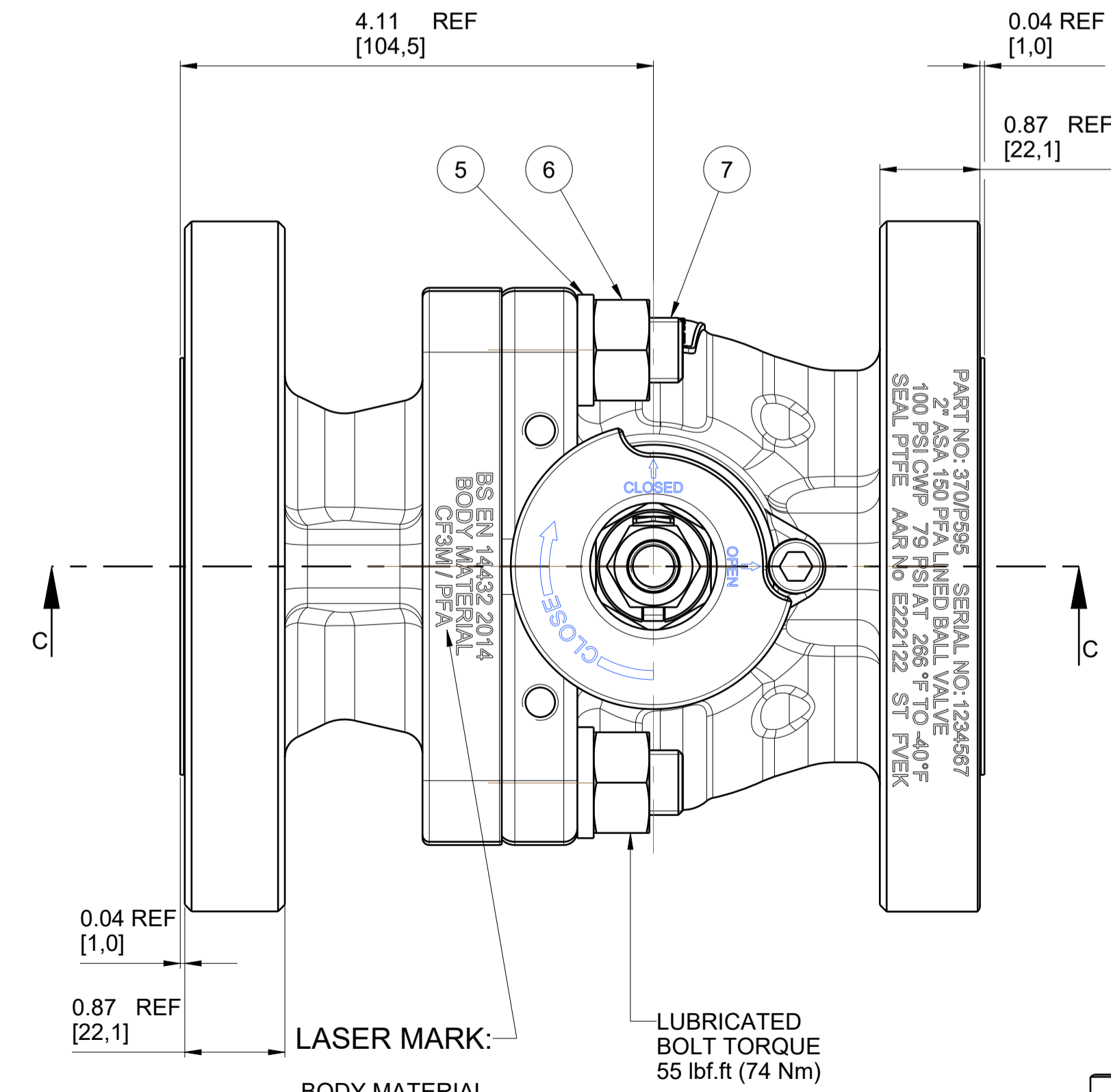
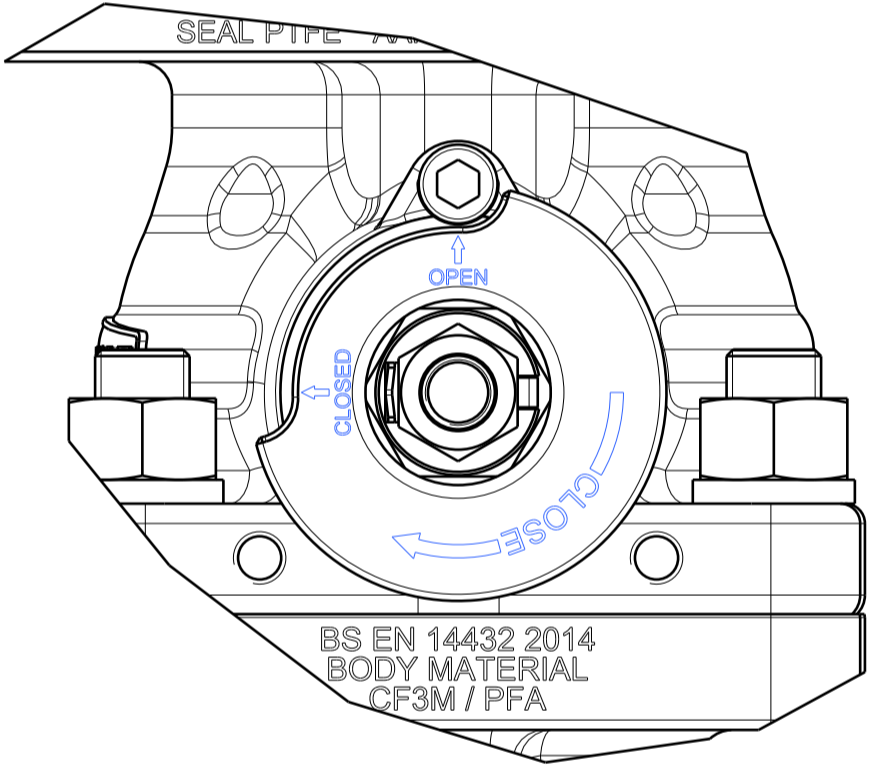
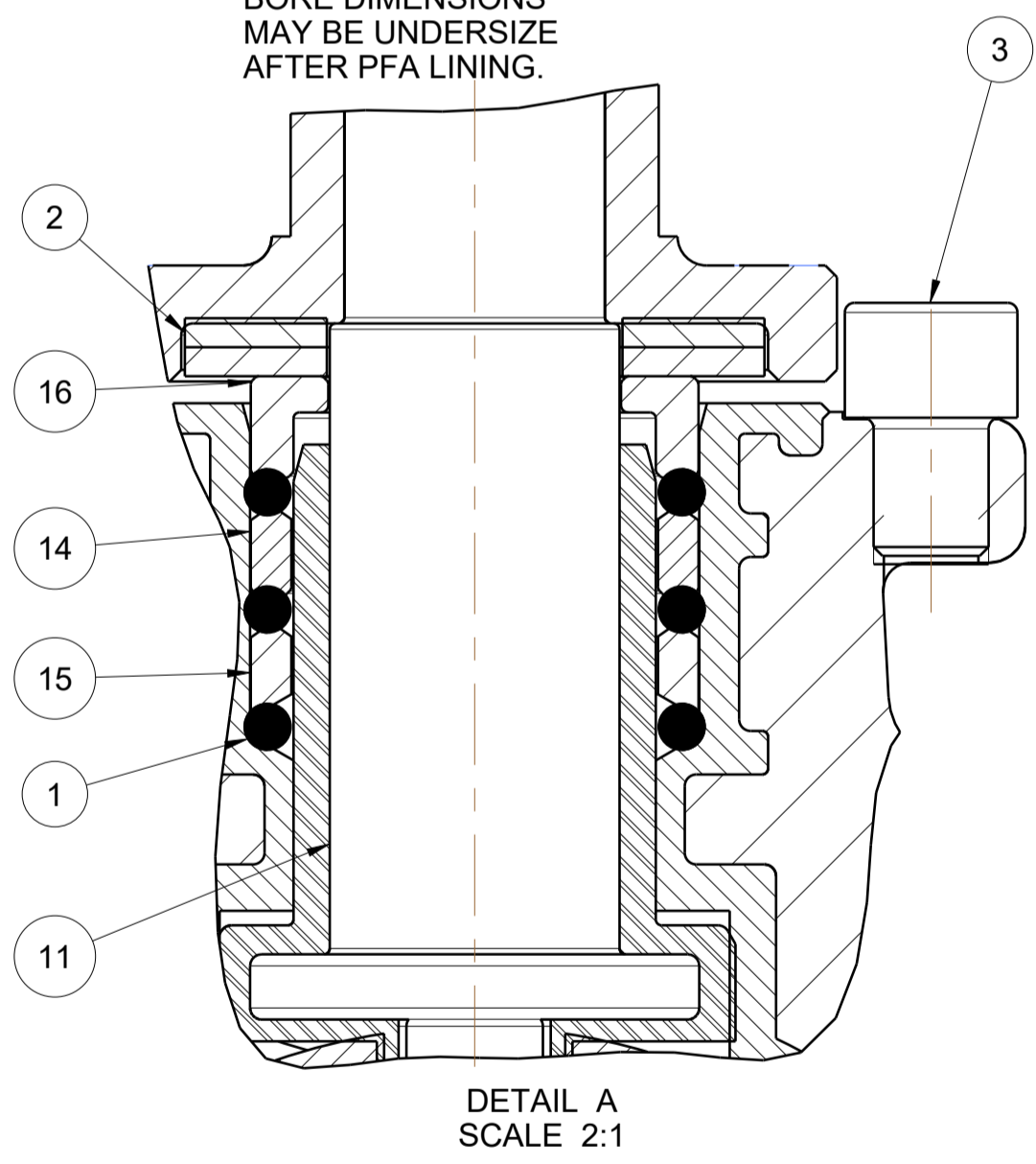
AAR APPROVAL NUMBER: E222122

DRAWING STATUS		Production	
REVISION	01	SIG	D BAILEY
		11-Nov-22	
AAR NO E222122 ADDED, CF3M / PFA WAS PFA / CF8M			



NOTE:  
 ASSEMBLE BELLVILLE WASHERS  
 BACK TO BACK NOT THE SAME WAY.

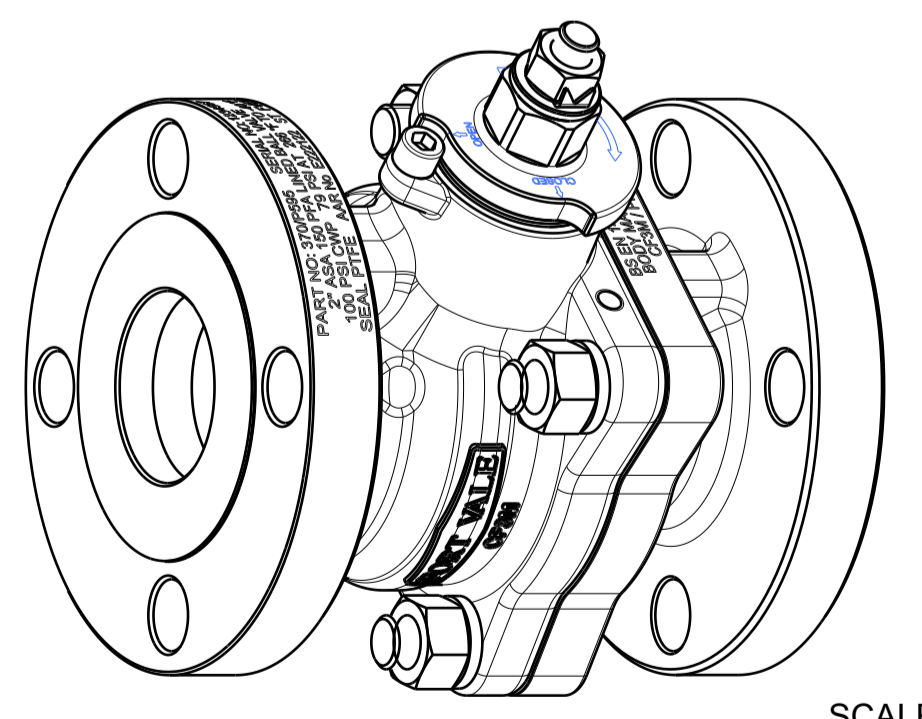
SPINDLE TO BE A SNUG  
 FIT IN THE BORE.  
 BORE DIMENSIONS  
 MAY BE UNDERSIZE  
 AFTER PFA LINING.



MATERIAL  
 CF3M STAINLESS STEEL WITH  
 PFA LINED WETTED PARTS

NOTE!  
 LASER MARK  
 DETAILS:-

PART NO: 370/P595 SERIAL NO: 1234567  
 2" ASA 150 PFA LINED BALL VALVE  
 100 PSI CWP 79 PSI AT 288 °F TO -40 °F  
 SEAL PTFE AAR No E222122 ST FVEK



Index	Part Number	Description	Material	Qty
19	370/P558	HANDLE BOSS AND STOP PLATE	304/316 STST	1
18	370/P554	RETAINING WASHER	304L/316L STST	1
17	370/P553	TAB WASHER	304/316 STST	1
16	370/P514	TOP STUFFING COLLAR	316 STST	1
15	370/P513	BOTTOM STUFFING COLLAR	PEEK	1
14	370/P512	TOP STUFFING COLLAR	PEEK	1
13	370/P511	5MM KEYWAY KEY	A4-70	1
12	370/P508	PFA LINED BALL	316 STST / PFA	1
11	370/P506	PFA LINED SPINDLE	316 STST / PFA	1
10	370/P505/1	MAIN SEAL	TFM 1600	2
9	370/P504	MACHINED LINED OUTLET	CF3M / PFA	1
8	370/P501	MACHINED LINED BALLVALVE BODY	CF3M / PFA	1
7	312/1036	9/16" UNF X 55mm LONG	304 STST	4
6	251/0086	9/16 UNF NUT	304 STST	4
5	5123-013	9/16" FLAT SPRING WASHER	304 STST	4
4	5122-178	7/16"-20 UNF FULL NUT	304 STST	1
3	5121-241	5/16" UNC x 0.38" CAP HEAD BOLT	A2-70	4
2	5113-041	20mm BELLEVILLE WASHER	301 STST	2
1	5005-654	BS214 PTFE O RING	VIRGIN PTFE	3
Assembly BOM				

**FORT VALE**  
 SALES@FORTVALE.COM WWW.FORTVALE.COM  
 ENGLAND, USA, CHINA  
 NETHERLANDS, SINGAPORE

© FORT VALE ENGINEERING LTD 2021. DO NOT SCALE - IF IN DOUBT ASK

UNLESS OTHERWISE STATED	FIRST ANGLE PROJECTION	MATERIAL: CF3M / PFA
X.X ±0.5	SURFACE FINISH 3.2um MAX	SCALE: 7:8
X.XX ±0.25	CORNER RADII 0.8	MASS: 11.76 kg
X.XXX ±0.125	CORNER CHAMFER 1.0 X 45°	CHECKED: DVN
ANGLES ±0.5°	REMOVE ALL BURRS AND SHARP EDGES	DVN: 37547
DESCRIPTION	REGISTERED FIRM: Lrq4007111	SHEET 1 OF 1
TYPE	2" ASA 150 PFA LINED BALL VALVE	DRAWN BY: D BAILEY
	FLANGE TO FLANGE FULL BORE	DATE: 13-Dec-21
		DRG. NO.

**370/P595**  
 A1 UNITS mm